

WELCOME TO GREAT HOLLOW MIDDLE SCHOOL



OUR ADMINISTRATIVE TEAM



John Macaluso
ASSISTANT PRINCIPAL
Last Names from A-L



John Scomillio
PRINCIPAL



Peter Russo
ASSISTANT PRINCIPAL
Last Names from M-Z

GHMS SCHOOL COUNSELORS

SCHOOL COUNSELORS

Mr. Riviello (6th: A-Fe)

Mrs. Stone (6th: Ff-L)

Mrs. Kerins (6th: Ma-Mu)

Mrs. Urso (6th: Mv-Z)

SOCIAL WORKER

Mrs. Cleveland

SCHOOL PSYCHOLOGISTS

Mrs. Cortese

Ms. Ahern

OFFICE ASSISTANT

Mrs. O'Brien

OTHER PEOPLE YOU SHOULD KNOW

Director of English – Raina Ingoglia
Director of Mathematics – Angelica Babino
Director of Science – Stephanie O'Brien
Director of Social Studies – Chuck Benvenuto
Director of Fine Arts – Michael Mastrangelo
Director of World Languages – Vincenza Graham
Director of CTE – Christine LoFrese
Director of Guidance – Kevin Colon

OFFICE CLERICAL STAFF

Ms. Roberta Hanft – Principal's Secretary
Ms. Mary Ann Mendola – Assistant Principal Secretary
Ms. Lorraine Jaworski – Main Office Secretary
Ms. Janice Kennedy – Assistant Principal Secretary
Ms. Cecilia O'Brien – Guidance Counselor Secretary



FIRST TIME MIDDLE SCHOOL PARENTS??



RIGHT NOW YOU
MIGHT BE FEELING
LIKE....



Gotta stay calm!



First Time Parent



1 Month Later



4 Years And 2 More Kids Later, You're Like...



BY THE END OF THE
PRESENTATION,
YOU'LL BE FEELING
LIKE...





MODE: EXTREMELY RELAXED

© Kawaii-04-0047 04/19/2020/01 Media

memegenerator.net





RELAX
YOU'RE
IN
GOOD
HANDS

KeepCalmAndPosters.com



ABOUT TONIGHT'S AGENDA

Personalized
School Tour



GHMS Parent
Presentation

TONIGHT WE WILL REVIEW:

- + Overview of GHMS
- + Course offerings, clubs, activities
- + Typical student schedule
- + Typical student day in middle school
- + Q & A session

THE MIDDLE SCHOOL EXPERIENCE

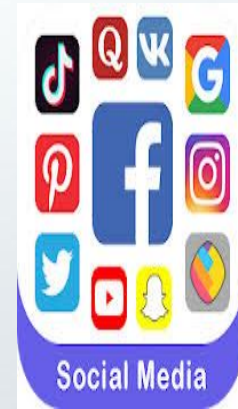
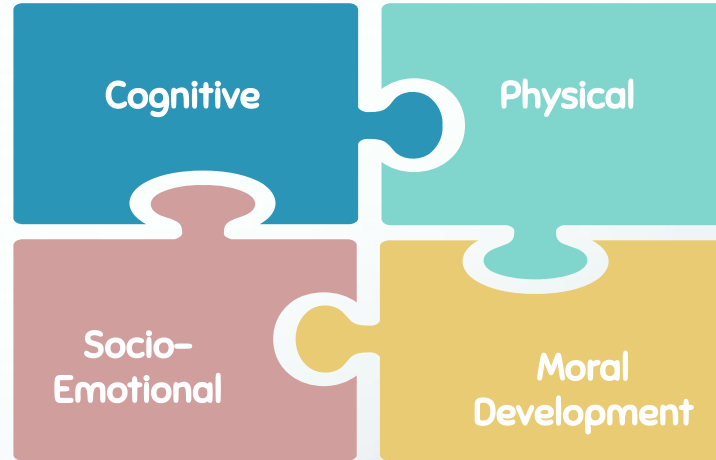
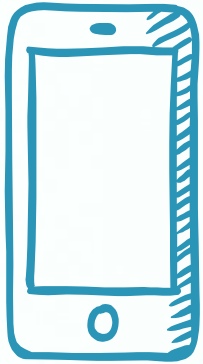


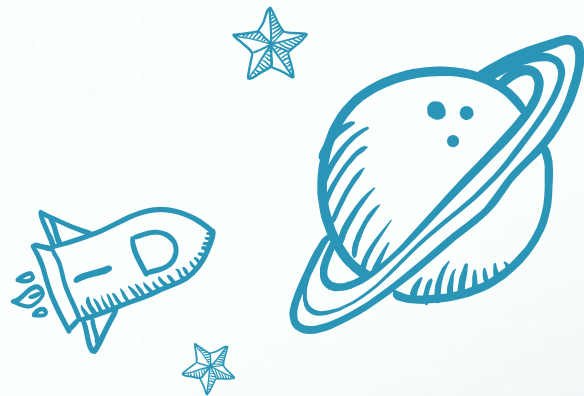
TOTO, I'VE A FEELING

WE'RE NOT IN KANSAS ANY MORE



MIDDLE SCHOOL DEVELOPMENT





NEW EXPERIENCES AT GHMS

Here are a few things different from elementary school



WHAT'S NEW!

- Much bigger school
- Kids rotate between classes
- Kids have multiple teachers
- Use of lockers
- Quarter classes
- Life in the cafeteria
- Gym
- Music
- Buses
- Access to a designated guidance counselor
- Much more freedom!



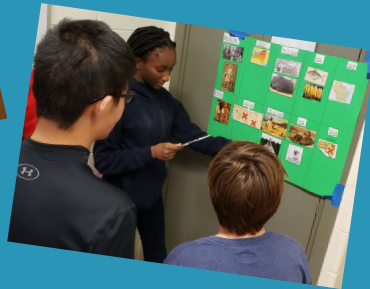
BELL SCHEDULE 2023-2024

School starts at
7:50am

School ends at
2:33pm



Sample 6th Grade Schedule



PERIOD 1	ELA
PERIOD 2	ELA
PERIOD 3	Music
PERIOD 4	Lunch
PERIOD 5	Social Studies
PERIOD 6	Math
PERIOD 7	Math Lab/Phys Ed
PERIOD 8	Science
PERIOD 9	Tech Ed/Tech Lit/Art/FACS



6TH GRADE TEACHER TEAMS





Team 6A

Mr. Andolina Mrs. Campbell
 Mr. Sillam Mrs. Portsmore
 Mrs. Haynes Mrs. Skartsiaris
 Mrs. Piazza

6th G R A D E



Team 6B

Mrs. LaRussa Mrs. Rooney
 Mr. Thornton Mrs. Baumeister
 Mrs. Damato Mrs. Skartsiaris

T E A M



Team 6D

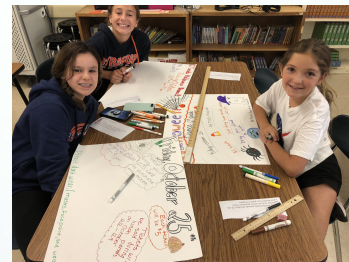
Mr. Klee
 Mrs. Nelson
 Mr. Hart
 Mrs. Skartsiaris



CLUB OFFERINGS AT GREAT HOLLOW MIDDLE SCHOOL

- Accounting/Stock Market Game Club
- Artistic Craft Club
- Chef's Club
- Digital Media Club
- Engineers Competition Club
- FCCLA Club
- First Lego League Robotics Club
- First Responders Club
- Friendship Club
- GSA
- Intramurals
- Literary Art/Library Club
- Mock Trial Club
- MoMathlon Club
- Music Theater Club
- National Junior Honor Society
- Science Olympiads
- Select Chorus

** Please keep in mind that Club Offerings are subject to change! *



CHARACTER DEVELOPMENT

Guest Speakers (Ryan's story, Rohan Murphy)

School Theme Days (P.S. I Love You Day, College Day, Red Ribbon Week, Coaches vs. Cancer, Spirit Week)

Anti Bullying Efforts (Athletes Helping Athletes, LICAB)

School Assemblies (Voices from the Fire, SCPD)

Project Wisdom (Daily announcements)

Student Recognition Awards (NJHS, STAR Student, MVTP, Scholar Athlete Breakfast, Academic Awards Night)

Great Hollow PTA

The Great Hollow PTA is here to serve the needs of our students, staff, and families throughout the year.

The PTA supports students and their families by providing year long programs and events for every child in every grade level. Please consider volunteering to support our children.

The upcoming 2023-2024 will need your help to sustain a successful school year. Your involvement will continue to help our programs thrive.

Membership | \$10.00 per person

Be a voice! Have a vote! Continue to help our children!

Great Hollow Middle School PTA website

www.greathollowpta.com

Communicate with
teachers

Be Involved

Attends school
functions

Teach respect

Check Google
Classroom

Limit social
media

Foster
independence

WHAT CAN YOU DO

Be a role model

Teach time
management

AS PARENTS?

Listen

Set limits

Proper sleep & eating

Don't over schedule

Monitor

Review
homework

Encourage



6TH GRADE SUMMER ORIENTATION

TUESDAY, AUGUST 27TH 10 - 11:30 AM ORIENTATION
WEDNESDAY, AUGUST 28TH 8:30 AM - 12:00 PM OPEN HOUSE

